

A photograph of three women with curly hair laughing joyfully. The woman in the center is wearing a yellow two-piece outfit, the woman on the left is wearing a beige top and blue shorts, and the woman on the right is wearing a teal top and white pants. They are all smiling broadly and have their arms around each other. The background is a plain, light-colored wall.

Pho^othera

HELPING PATIENTS LIVE CLEAR with HOME PHOTOTHERAPY

An Extensive Guide to Pho^othera Home Phototherapy & Devices

Why Phototherapy?

Phototherapy (the treatment of photoresponsive skin disorders) is notably safe and effective. Phototherapy has minimal side effects (erythema)¹ compared to biologic alternatives and does not require injections.

Most commonly used in the treatment of psoriasis, phototherapy is the first line of treatment for many patients because of its efficacy, safety, and cost. It offers a safe and effective solution for patients, even children² and pregnant women³, who often cannot be treated with potentially harmful alternatives. Phototherapy is the answer for many patients who are looking for a solution to fit their lifestyle.

Home Phototherapy: The Clear Choice

Phothera home phototherapy offers healthcare providers a safe and effective solution for patients managing chronic skin conditions like psoriasis, eczema, and vitiligo. Our devices are built with patient safety as a top priority, utilizing advanced features that ensure treatments are delivered accurately and consistently in a controlled home environment. Extensive clinical studies have shown that home phototherapy can be just as effective as in-office treatments, allowing patients to achieve clear, healthy skin without the need for frequent clinic visits. For providers, this means a reliable treatment option that maintains high standards of patient care.

In addition to safety and effectiveness, Phothera's technology offers valuable insights into patient adherence and treatment progress. Our ClearLink Controller offers integrated monitoring capabilities that allow healthcare providers to track treatment duration and frequency. This real-time data provides a clear picture of the patient's commitment to the regimen, enabling timely adjustments and enhanced communication between providers and patients. Knowing patients are consistently adhering to their prescribed treatments gives providers the confidence that their patients are receiving high-quality, managed care at home.

For healthcare providers, prescribing Phothera home phototherapy is not only a way to empower patients with safe, effective care but also a means of achieving greater peace of mind. By choosing Phothera, providers can trust that their patients are supported by advanced technology that promotes both efficacy and safety in a home setting.

Phothera's mission aligns with the provider's goal: to offer treatment solutions that improve patient outcomes and allow them to lead lives with greater comfort and confidence.



1) Hearn RMR, Kerr AC, Rahim KF, Ferguson J, Dawe RS. Incidence of skin cancers in 3867 patients treated with narrow-band ultraviolet B phototherapy. *British Journal of Dermatology*. 2008;159:931-935. doi: 10.1111/j.1365-2133.2008.08776.x.
2) Jury CS, McHenry P, Burden AD, Lever R, Bilsland D. Narrowband ultraviolet B (UVB) phototherapy in children. *Clin Exp Dermatol*. 2006 Mar;31(2):196-9. doi: 10.1111/j.1365-2230.2006.02061.x. PMID: 16487089.
3) Bangsgaard N, Rerbye C, et al. "Treating psoriasis during pregnancy: Safety and efficacy of treatments." *Am J Clin Dermatol*. 2015 Oct;16:389-98.

Integrating Dosimetry

Benefits can include:

- Faster clearing due to accurate dosing with each treatment
- Less risk of erythema
- Lower risk of long-term side effects
- More efficient use of lamps

How it works:

The power output of phototherapy devices varies with age and temperature - up to 50% over a given treatment. Integrating dosimeters measure the actual light output in real-time and adjust the treatment time to provide your patient with precisely the programmed dose.

Why it is essential:

The output of the device can vary greatly depending on environmental conditions in the phototherapy room. This effect can be reduced by warming up your device, but this takes time and uses valuable lamp hours. While everyone understands the risks of overdosing (erythema), under-dosing can compromise a patient's treatment as well. Photo-adaptation is the natural process that makes a patient's skin more tolerant of sunlight. While it protects from sunburn, in phototherapy, it means the skin will require a more substantial total dose to clear, which in turn increases the potential for long-term side effects. Dosimetry is the only means of ensuring precisely the right dosage.

The bottom line:

Integrating dosimetry delivers precisely the dose prescribed without the wasteful warmup time. It is the only way to ensure that dosing will be consistent and will produce the most efficient result - getting your patients back to life again.





Powered by ClearLink™

Phothera's ClearLink Control System features an intuitive, touch-screen controller that makes delivering phototherapy treatments easier than ever. Designed with the user in mind, ClearLink offers an improved overall experience, and makes treating patients simple and precise.

The ClearLink Controller is available in three modes for home phototherapy:

- **Timed Mode**, the most basic of the two, functions similarly to a stop watch and turns the device off when the entered time has been reached.
- **Guided Mode**, will literally guide a patient through their treatments via a series of onscreen prompts. Patient responses to these series of questions adjust and refine subsequent treatments.
- **Dosimetry Mode** employs an integrated sensor to constantly monitor the lamp output and ends the treatment when the entered dose has been given.

Why You Should Choose Guided or Dosimetry.

Phothera's ClearLink Controller, in Guided or Dosimetry Mode, delivers accurate and customized dosing to minimize the risk of under or overdosing – ensuring maximum phototherapeutic benefits with minimal risk.

In addition, healthcare providers can have peace-of-mind in knowing that when they utilize Guided or Dosimetry, the protocol they prescribe is the protocol that is being delivered thanks to the integrated smart features of the ClearLink Controller.

Phothera's ClearLink Controller

The next evolution in phototherapeutic control.

- 1 Self-Contained. The ClearLink Controller is an integral part of many Phothera home devices.
- 2 Touch-screen technology combined with an intuitive user interface (UI) makes using a Phothera phototherapy unit as simple and easy as possible.
- 3 A unique, only offered by Phothera, option allows healthcare providers to choose from multiple control options best suited to the patients needs, abilities, and goals.
- 4 The ClearLink Controller has the ability to record patient treatments and export the data into a HIPAA compliant format for future review. This enables providers to have insight into their patients treatments – ensuring proper adherence to the assigned treatment protocol.





Phothera 1200

AFFORDABLE, VERSATILE, and COMPACT

This full-body unit encircles the patient completely so that every part of the body is treated at once for the shortest possible exposure times.

Phothera's integrating dosimetry system ensures precise and accurate dosing for each treatment via a built-in metering system which automatically adjusts treatment time to compensate for variations in output.

Control system located outside the unit to prevent tampering while the treatment is in process.

Affordable

- The 120 V electrical requirements of the Phothera 1200 make it economical to operate, costing just pennies per treatment.

Powerful

- Twelve, powerful, Narrowband UVB lamps fully encompass the patient to effectively treat while minimizing exposure times.

Compact

- The unique, elliptical design of the Phothera 1200 enhances the uniform irradiance of the device and also makes efficient use of valuable floor space in your office.
- With its doors folded inward, the device can be easily rolled through a household doorway as small as 27 inch (69 cm).

Controller Options:

- ClearLink Controller
- DT Controller

- 1 Optional cooling fans at top of unit make treatments more comfortable.
- 2 The ClearLink controller provides integrated dosimetry. A programmable lock-out feature prevents unauthorized use. When activated, the user must enter a code to operate the unit.
- 3 The Phothera 1200 is equipped with 12 Narrowband UVB lamps.
- 4 Neutral colors and durable finish exterior easily fit into your home decor.
- 5 Elliptically shaped interior ensures a more uniform exposure than square or diamond-shaped units.
- 6 Doors roll closed on castors to provide a 360° treatment area. A platform comes with the unit to elevate the patient to the height of the lamps for optimal treatment of lower legs.



Treatment Area	Full body surround	
Height	77"	195.6 cm
Width	41"	104 cm
Depth	Doors Closed - 30.5"	78 cm
	Doors Open - 42"	107 cm
Unit Weight	12 Lamp - 327 lbs	148 kg
Voltages Available	110-120 V, 50/60 Hz or 220-240 V, 50/60 Hz	
Electrical Outlet	12 lamp devices can be plugged into a standard household receptacle.	

We recommend the Phothera 1200 for patients that:

- Need to treat full body and widespread conditions.
- Are comfortable in enclosed spaces.



Phothera

600-3D

Safe and Accurate

- Optional integrating dosimetry system provides consistent treatment by continually measuring the energy output in real-time. The device will always deliver the correct dose regardless of the factors that can affect treatment times, such as lamp age, room temperature, or line voltage.
- A security lock-out feature prevents unauthorized use of the device.
- UV blocking eyewear is provided with each unit and a protective grid prevents direct contact with the lamps.

Efficient

- The Phothera 600-3D utilizes a signature double door design to maximize the amount of light that the skin receives and facilitates treatment of all body shapes and sizes.
- Door lamps double body coverage and cut treatment times in half. The doors also conceal and protect the lamps from breakage when the unit is not in use.
- Available lamp types: Narrowband UVB
- The Phothera 600-3D devices require just over 3 square feet of floor space. Optional castors or space-saving wall mount kits are available

Controller Options:

- ClearLink Controller
- DT Timer

Treatment Area	33" x 70.25"	83.8 x 178.4 cm
Height	Without Castors - 74.5" With Castors - 78"	189.2 cm 198.1 cm
Width	Doors Closed - 21" Doors Open - 39.5"	53 cm 100 cm
Depth	With Feet - 24.0" Without Feet - 6.5"	61 cm 16.5 cm
Unit Weight	129 lbs	58.5 kg
Voltages Available	110-120 V, 60 Hz or 220-240 V, 50 or 60 Hz	

- 1 Elegant and slim, the Phothera 600-3D devices requires very little floor space - making it ideal for a variety of home settings.
- 2 The ClearLink controller can provide integrating dosimetry. A programmable lock-out feature prevents unauthorized use. When activated, the user must enter a code to operate the device. *also available with the DT Controller
- 3 The Phothera 600-3D is an efficient, 180 degree panel device equipped with 8 or 12 Narrowband UVB lamps.
- 4 The Phothera 600-3D can be equipped with three lamps in each door, doubling body coverage and cutting treatment times in half.
- 5 Doors conceal and protect lamps when device is not in use.

Side view with doors closed



Front view with door closed



We recommend the Phothera 600-3D for patients that:

- Have limited space.
- Have full-body conditions that encompass multiple sides of the body.



Phothera 600

Safe and Accurate

- Optional integrating dosimetry system provides consistent treatment by continually measuring the energy output in real-time. The device will always deliver the correct dose regardless of the factors that can affect treatment times, such as lamp age, room temperature, or line voltage.
- A security lock-out feature prevents unauthorized use of the device.
- UV blocking eyewear is provided with each unit and a protective grid prevents direct contact with the lamps.

Intelligently Designed

- To accommodate patient goals, needs, and abilities, the Phothera 600 can be equipped with either the ClearLink Controller or DT Controller.
- Available lamp types: Narrowband UVB
- The Phothera 600 features four or six high-output, six-foot lamps, that are highly effective at delivering phototherapeutic relief.
- Surprisingly slim, all Phothera 600 devices require just over 3 square feet of floor space. Optional castors or space-saving wall mount kits are available

Controller Options:

- ClearLink Controller
- DT Controller

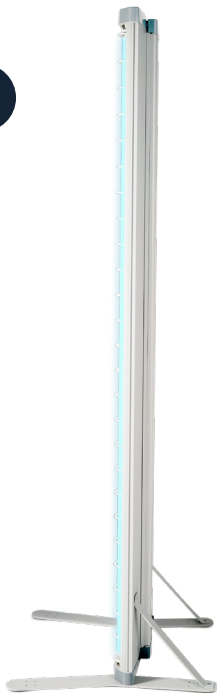
Treatment Area	19" x 70.25"	48.3 x 178.4 cm
Height	Without Castors - 74.5" With Castors - 78"	189.2 cm 198.1 cm
Width	20"	50.8 cm
Depth	With Feet - 24"	61 cm
Unit Weight	75 lbs	34 kg
Voltages Available	110-120 V, 60 Hz or 220-240 V, 50 or 60 Hz	

- 1 Elegant and slim, the Phothera 600 encompasses a footprint that is under two feet wide by two foot deep and plugs into standard receptacle – making it ideal for a home setting.
- 2 The Phothera 600 can be powered by the DT or ClearLink Controller – offering patients and providers a tailored solution that aligns with patient goals, needs, and abilities.
- 3 Enclosed behind the protective grid are four or six, powerful six-foot lamps.
- 4 The slim profile of the device makes wall-mounting quick and easy.

Side View

Rear View

4



We recommend the Phothera 600 for patients that:

- Have limited space.
- Have widespread conditions.



Phothera 200

Safe and Accurate

- Optional integrating dosimetry system provides consistent treatment by continually measuring the energy output in real-time. The device will always deliver the correct dose regardless of the factors that can affect treatment times, such as lamp age, room temperature, or line voltage.
- A security lock-out feature prevents unauthorized use of the device.
- The custom molded acrylic front panel is durable and protects the lamps from damage and the user from accidental contact with the lamps.

Efficient

- The Phothera 200 utilizes power-boosting components in conjunction with U-shaped PL-L lamps to deliver surprisingly short treatment times.

Practical

- The ingenious design enables the device be positioned in a variety of ways, making it ideal for treating multiple regions of the body.

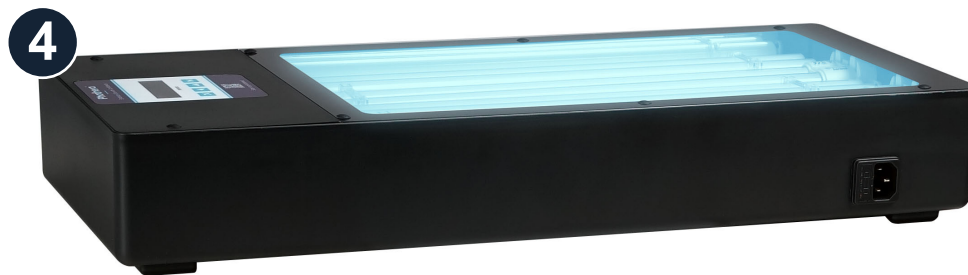
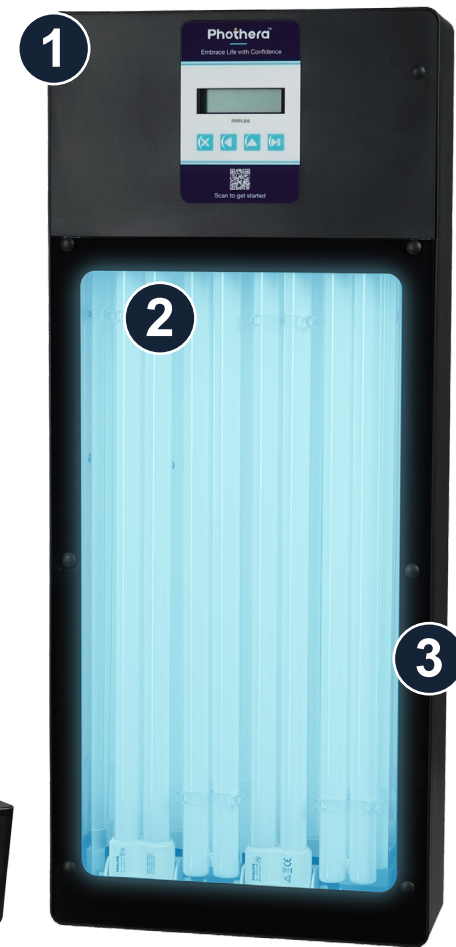
Controller Options:

- ClearLink Controller
- DT Controller

Treatment Area	9.25" x 18"	23.5 cm x 45.7 cm
Height	22.5"	57.1 cm
Width	9.5"	24.1 cm
Depth	3.5"	8.89 cm
Unit Weight	7 lb	3.1 kg
Voltages Available	110-120 V, 60 Hz or 220-240 V, 50/60 Hz	



- 1 The Phothera 200 can lie flat, stand on end, or on its side to accommodate a wide variety of treatment positions.
- 2 U-shaped lamp technology generates more power than conventional lamps. This means shorter treatment times and longer lamp life. Uses standard household outlet.
- 3 Equipped with four, high intensity lamps. Lamp choices are UVA, UVA1, and Narrowband UVB.
- 4 The exterior is rigid, easy to clean and scratch resistant, and the crystal clear acrylic cover protects the user from contact with the lamps while also providing a convenient resting area during treatments.
- 5 Optional stand allows device to pivot 360° for comfortable treatment of back of hands and tops of feet.



*Stand sold separately

We recommend the Phothera 200 for patients that:

- Have localized conditions on specific areas of the body, such as the face, arms, back or chest.
- Have a need for a low cost option for hand and foot treatment.



PhoThera 100

Small and Portable

- At just over nine inches wide, and under three inches tall, the PhoThera 100 is discreet handheld phototherapy device that is perfect for travel.
- The light-weight design enables any patient to use the device without tiring.

Efficient

- The high-intensity lamp clears as effectively as the powerful, top-of-the-line products found in clinics.

Practical

- The custom molded slide-on comb attachment separates the hair for effective scalp treatments while doubling as a distance guide to ensure consistent treatments.
- A customizable security lock-out pin code prevents unauthorized use of the device.

Controller Options:

- DT Controller

Treatment Area	1" x 4.5"	2.54 cm x 11.4 cm
Wand Size	8.25" x 1.75"	21 cm x 5 cm
Wand Weight	4 oz	0.1 kg
Fixture Size	9" x 5"	23 cm x 13 cm
Total Height	2.75"	7 cm
Total Weight	1 lb 12 oz	0.8 kg

- 1 The Phothera 100 features a slim and lightweight design that reduces user fatigue when used for multiple, subsequent treatments.
- 2 The handheld wand encases a high-intensity lamp that clears as effectively as top-of-the-line clinical devices.
- 3 The self-enclosed DT Timer makes treatment entry simple and easy.
- 4 The custom molded slide-on comb attachment is designed to separate the hair for effective scalp treatments while also doubling as a distance guide – ensuring consistent and accurate treatments.
- 5 A carrying case conveniently stores the device and accessories when not in use or when traveling.



We recommend the Phothera 100 for patients that:

- Patients with spot or scalp conditions
- Those who frequently travel and need a portable device
- Patients who may need a secondary device for supplementary treatments.



Pho^othera 400

Safe and Accurate

- Optional integrating dosimetry system provides consistent treatment by continually measuring the energy output in real-time. The device will always deliver the correct dose regardless of the factors that can affect treatment times, such as lamp age, room temperature, or line voltage.
- A security lock-out feature prevents unauthorized use of the device.
- The custom molded acrylic front panel is durable and protects the lamps from damage and the user from accidental contact with the lamps

Compact and Versatile

- The thin and lightweight design, coupled with the device's minimal footprint enable the device to be used in a variety of home settings.
- Choose from varying lamp types, including Narrowband UVB, UVA, and UVA1 for a tailored solution to fit patient needs.
- The device can free stand or can be wall hung with a VESA mount.
- The device can easily be stored when not in use.

Controller Options:

- ClearLink Controller

Treatment Area	18" x 46.25"	45.7 cm x 117.5 cm
Height	49.5	125.7 cm
Width	21.5"	54.6 cm
Depth	Including Stand - 22" Without Stand - 3.5"	55.9 cm 8.9 cm
Unit Weight	10 lamp - 30 lbs 20 lamp - 37 lbs	13.6 kg 16.8 kg
Voltages Available	110-120 V, 60 Hz or 220-240 V, 50 or 60 Hz	



- 1 Measuring just four feet tall, the Phothera 400 is ideal for treating children and those with localized conditions.
- 2 Powered by the ClearLink Controller, the Phothera 400 offers patients and providers the ability to choose from time only, dosimetry, or guided mode.
- 3 Powerful lamps are arranged in an alternating pattern to eliminate 'dead spots', resulting in surprisingly short treatment times.
- 4 Custom molded feet provide a durable and stable footing.
- 5 A thin and lightweight design enables the device to be moved when not in use.

Rear View

Side View



We recommend the Phothera 400 for patients that:

- Have limited space, such as an apartment or dorm room.
- Have localized conditions and a full-body device is not necessary.

**Not all phototherapy companies are created equal.
Experience the Phothera difference.**

Our Staff - We are well known for our friendly and professional staff and are committed to you and your practice.

Our Support - When you choose a Phothera phototherapy unit, you can rest easy knowing that you have a high quality device backed by a full warranty and technical support.

Our Products - We lead the industry with a full line of clinical and home products tailored to every need. With industry leading innovation, you can count on Phothera to bring you the latest in phototherapy technology.

For information please contact Phothera:

Phone 216.831.0600
phothera.com
info@phothera.com